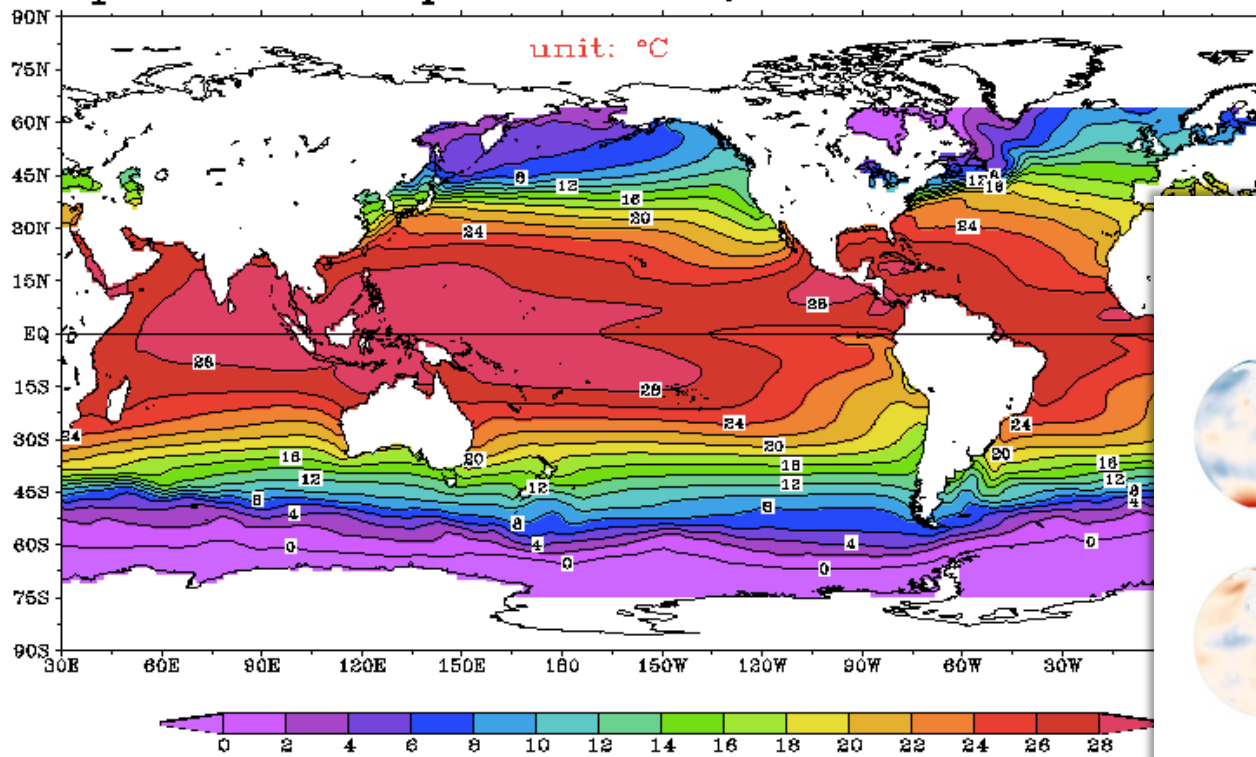


Cartography: A Translational Science for the Anthropocene?

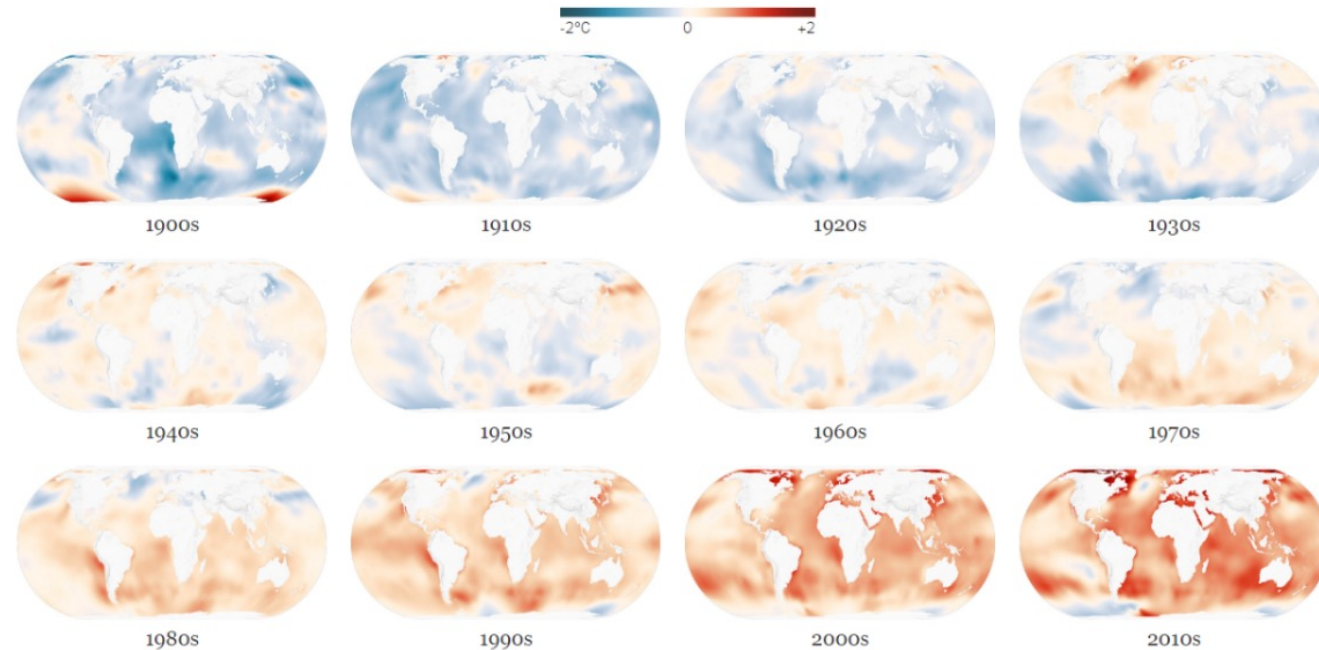
Carolyn Fish, PhD



Optimum Interpolation SST, Ann



Where the Oceans Have Been Colder and Hotter Than Average



Average temperatures from each decade compared with the 20th-century average.

NOAA

“We view ourselves as **translators** between scientists and readers... we bridge that gap”

—New York Times Graphics Editor

New York Times

Fish, C. (2020) Storytelling for making cartographic design decisions for climate change communication. *Cartographica: The International Journal for Geographic Information and Geovisualization*. 55(2), 69–84. DOI: 10.3138/cart-2019-0019



Portland Archives, A2004-002.2771. C 13821 St. Johns Bridge, Willamette River, Portland, Oregon.



Interdisciplinary

Transdisciplinary

questions are driven by societal problems



stakeholders
societal relevance

Convergence

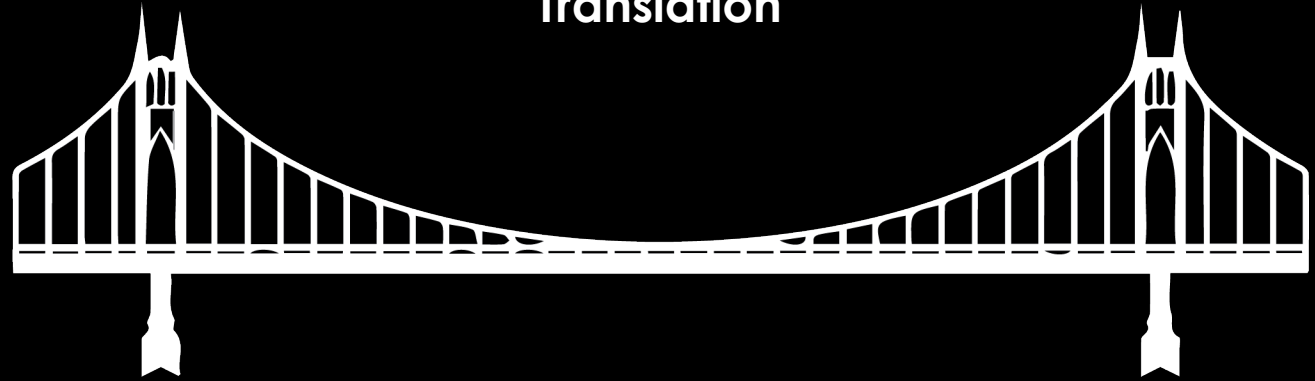
stakeholder
participants



Conventional
Knowledge

Academic
Knowledge

Translation



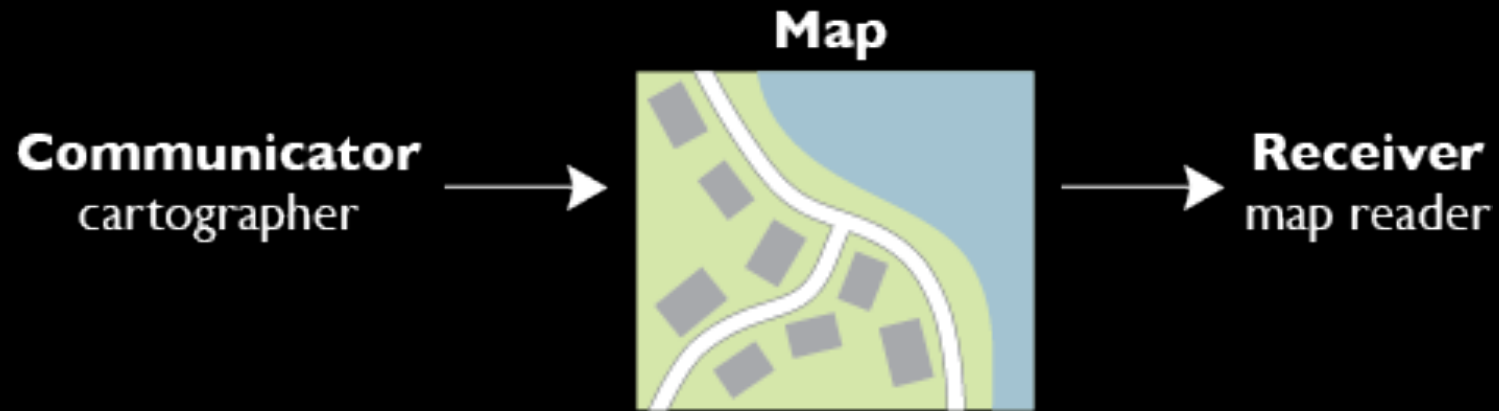
So where does cartography sit?



Cartographic Communication Model

(Board, 1967, Kolacny, 1969)

So where does cartography sit?



Cartographic Communication Model

(Board, 1967, Kolacny, 1969)

Can translational research be a way to bridge between research & practical cartography?

In what ways can cartographers (research & practical) play a part in large collaborative efforts to solve and answer some of the largest questions our society is grappling with?

How can the map be a means to start conversations, a way to communicate through design, collaborative tool, and a way to break down walls that divide disciplines?



Cartography (and cartographers) are well suited to make science more translational.

Maps are already a common method of analysis & tool for communication of science



Scale

Emotion

Personal Connection

Stories



Thank you

Carolyn Fish

@cartofish

cfish11@uoregon.edu



O